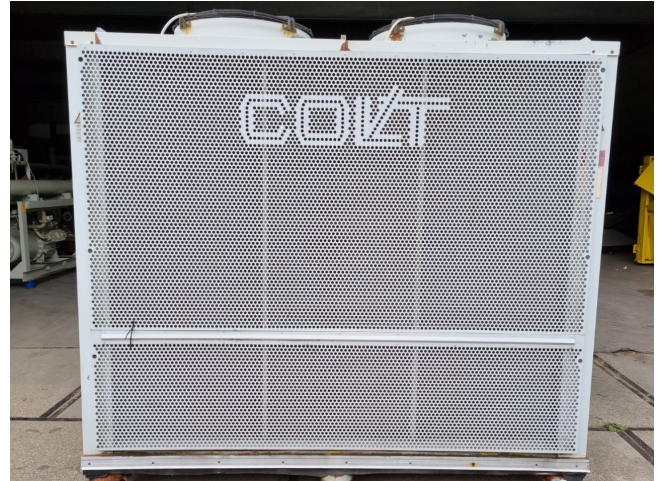


Colt CHA/WP 302P

Specifications

Marka	Colt
Typ	CHA/WP 302P
Typ produktu	Heat pump
Ogólna wydajność w kW	54,9
Ogólna wydajność w	15,6
Tonaż	
Czynnik chłodzący	Freon
Typ czynnika chłodzącego	R407C
Pump	✓
Moduł hydrauliczny	✓
Waga kg.	830
Rozmiary	2370x1140x2380 mm (LxWxH)
Compressor(s) type & model	2x Copeland ZR19M3E-TWD-551
Number of fans	2
Stock	1

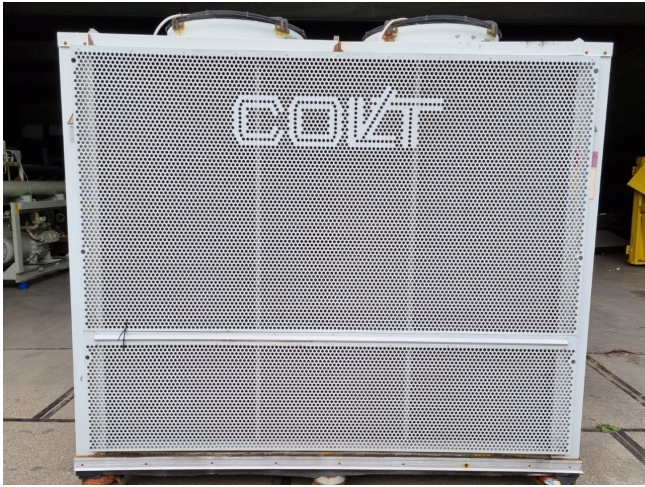


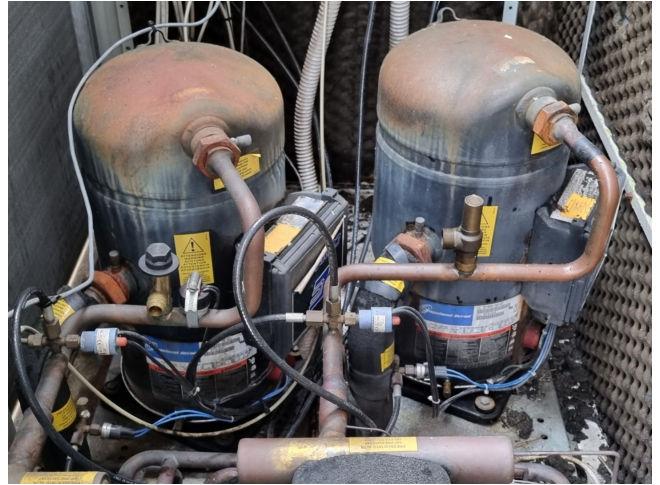
Description

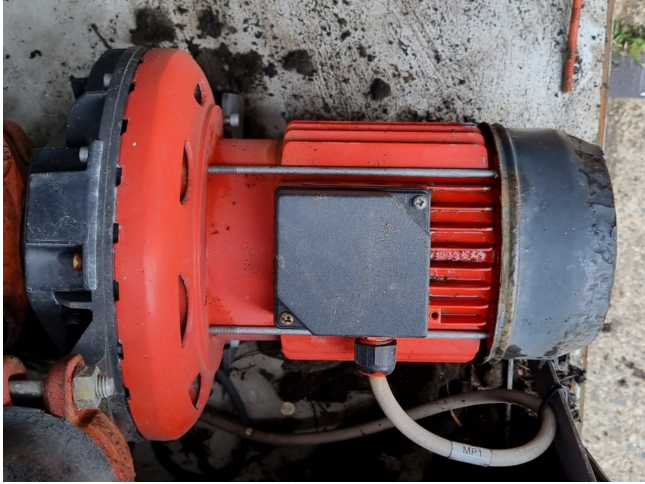
Used Colt CHA/WP 302P

Used Colt CHA/WP 302P reversible heat pump on R407C. Complete with 2 Copeland ZR19M3E-TWD-551 scroll compressors, condensor with 2 fans that have a total airflow of 27.720 m³/h, braced heat exchanger as evaporator, 2 Frigo Mec RV-155X422 liquid receivers with a volume of 6,6 liter, liquid line filter drier and a expansion vessel.

*All components of this used chiller will be tested on adequate performance, leak free condition (condensing blocks), compressors, fans, control panel, and so forth). Choosing HOSBV means buying with warranty. We perform an industrial cleaning. *If requested we are happy to arrange your shipment.







FRIGO MEC S.p.A.		LEGNAGO VERONA-Italy I-37048		CE
Tipo	RV-155X422			
Fabbricazione- Nr.	7304120			
Anno di fabbricazione	2007			
Volume V: L	6.6	Fluidi	G. 2	
Temperatura TS-°C	Min -10	Max	100	
Pres. max consentita	PS-bar	32		
Pres. di collaudo	PT-bar	45.76		
Identificazione + Nr.	CE0036			Cat. II